



PROJECT COMAL CITY COUNCIL PACKAGE | TAYLOR, TEXAS

DECEMBER 19, 2025



KDC Real Estate Development and Investments will develop this new digital infrastructure project as a responsible and community-oriented partner in Taylor, Texas.

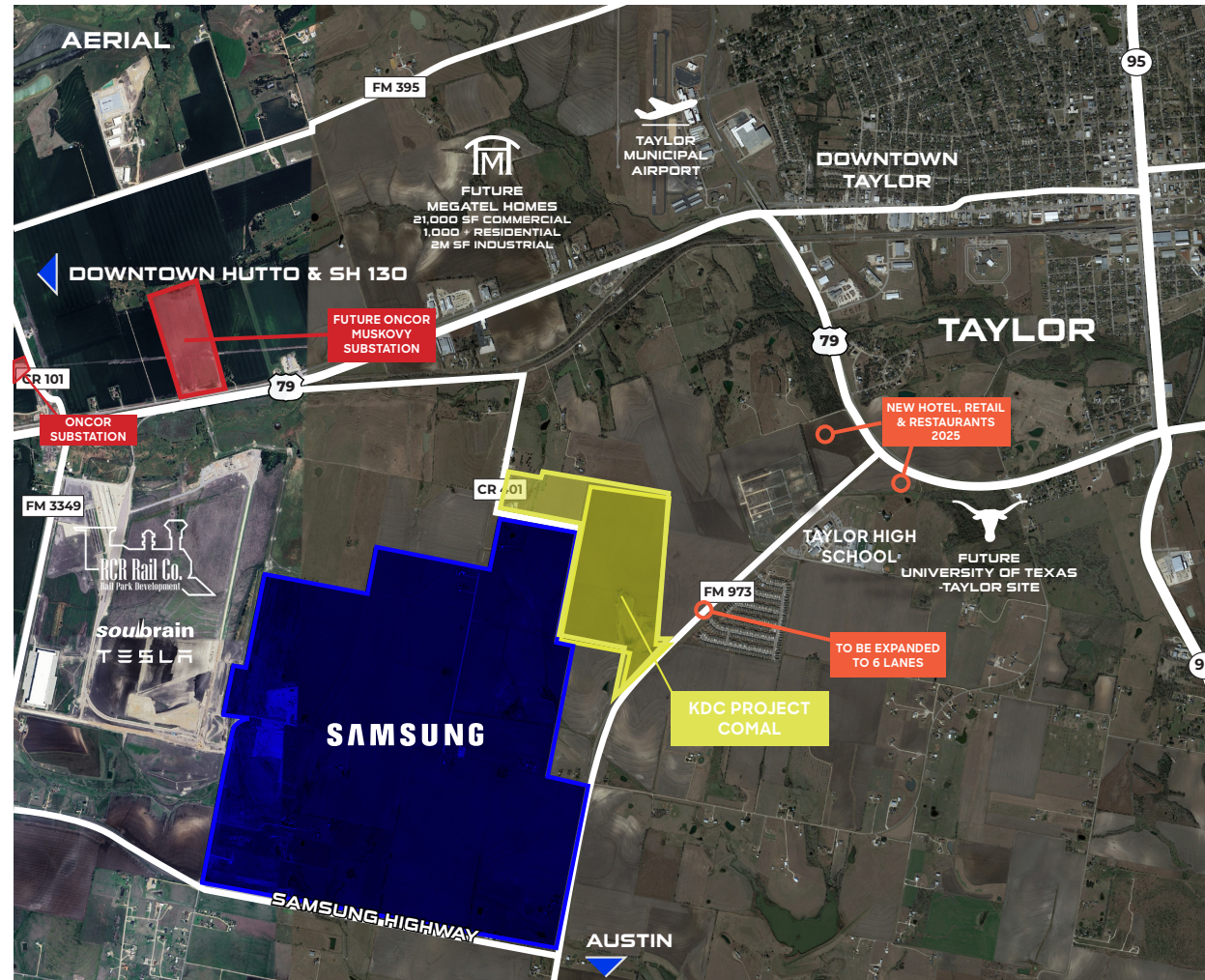
KDC proposes to develop a data center facility on 210 acres of land in Taylor, TX. Our top priority is to collaborate with the Taylor community to build a high-value, low-impact facility that will benefit the entire region through transformational economic benefits.

ABOUT THE DEVELOPER - KDC:

- » **40 million SF developed** in KDC's 35 year history across office, data center, and industrial markets nationwide
- » **Custom homebuilder mentality** for build-to-suit clients—personalized, detail-driven delivery
- » **Certainty in execution of financing**, backed by long-term capital relationships
- » **Significant in-house CM/PM capabilities** ensuring predictable schedules, budgets, and outcomes
- » **Strong relationships** with regional and local GC/vendor partners to ensure flexibility, quality, and market responsiveness

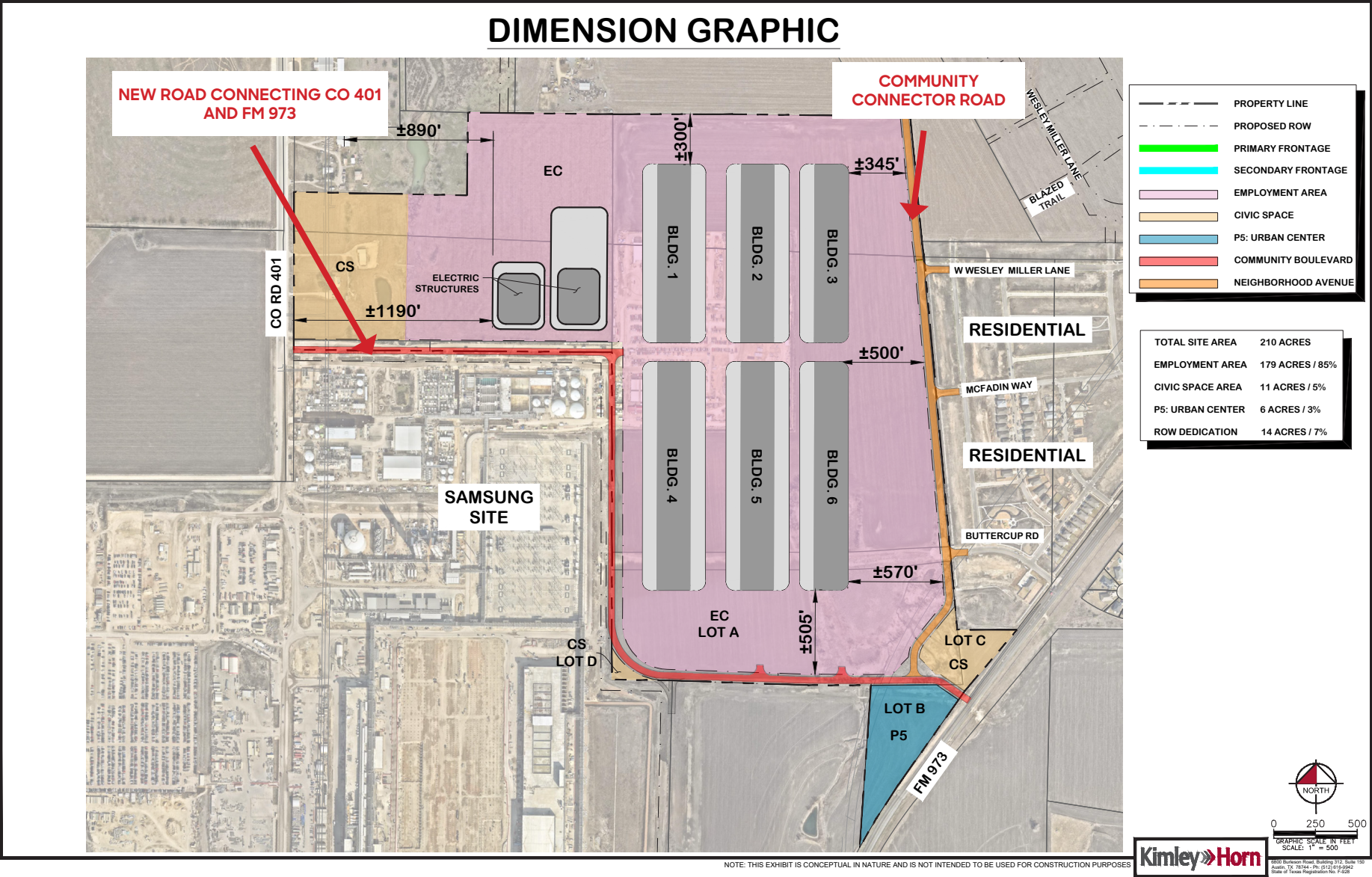
SITE SELECTION

- » In Taylor's planned Employment Center District - Conforms to the City of Taylor Comprehensive Plan and **recommended by Planning Staff for approval.**
- » Data Center use is appropriate **Adjacent to Samsung's** 1,200-acre industrial manufacturing plant.
- » Outside "the loop" in Taylor
- » **Low impact use** with limited traffic impact compared to logistics facilities or warehouse/manufacturing.
- » **Strategically located** to take advantage of Oncor's strengthening of local electrical network precipitated by growth in Taylor and surrounding areas.
- » The scale and location of Project Comal suit a single Class A hyperscale tenant

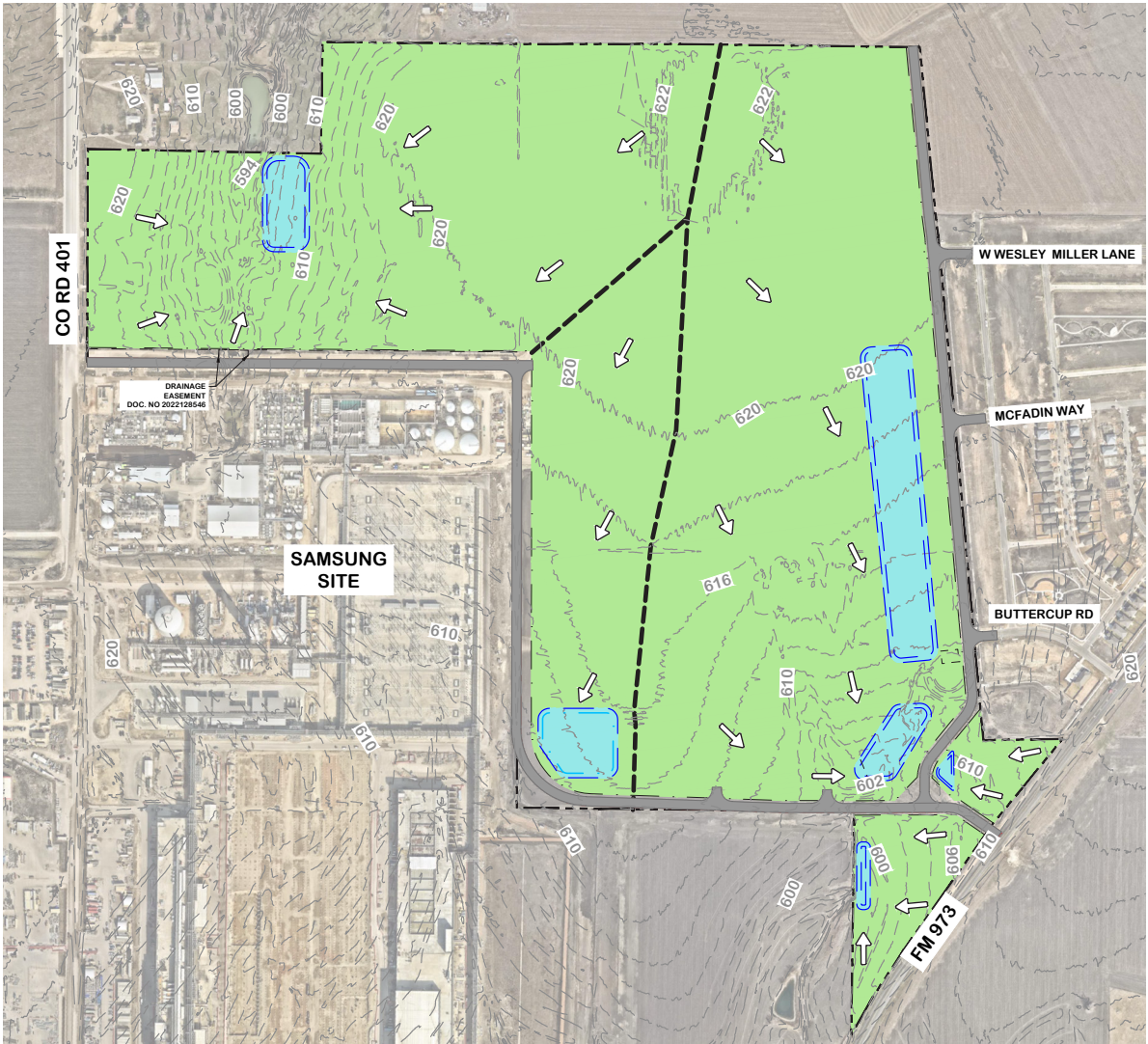


COMPARISON OF PROJECT CRITERIA

	REQUIREMENT / TYPICAL	PROJECT COMAL PROPOSED STANDARDS
Utilities	Use of potable public water for cooling	Air cooled chillers with a closed loop water system.
	City utility services that require upsizing	Option for future private non-potable source ONLY
	Storm runoff: match existing conditions	Sanitary and domestic water utility service on site currently are sufficiently sized for project
		On site detention provided + possibility of over detaining (reducing existing conditions) at Northwest
Design	Land Use: Only EC + CS	Provided: EC, CS and P5 (commercial/office fronting FM 973)
	Roadways: Basic Thoroughfare plan requirements	Dedicated ROW (14-ac), building road infrastructure (\$6m)
	Noise: State Level (85 dBA)	Meeting industry standards based on previous experience in similar locations
	Setbacks: 10-20'	Proposed: 300'+
	Landscape: code minimum (throughout site)	Focused landscaping density at Residential boundaries
	No sidewalk or 4' wide paving	Community boulevard will feature wide meandering sidewalks.
	Electrical easements in right of way	No electrical easements on City of Taylor ROW required
	Lighting design based on high visibility	Proposed: Dark sky lighting design requirements
Financial		
	Facilities built outside City boundaries	Voluntarily annexed to allow the City of Taylor to capture tax benefits
	High traffic warehouse facility	Low impact facility with large capital investment
	Minimum roadway contribution	Dedicating 14 acres (approximately \$6M land value) for community roads accomplishing the City of Taylor Thoroughfare plan goals.
	Park Contribution, not applicable	Committed to \$75,000 parks donation
	End-user: Enterprise/Colocation Data Center	Proposed: Hyperscaler Class A single tenant



DRAINAGE GRAPHIC



PROPERTY LINE
2FT-CONTOUR
EXISTING DRAINAGE DIVIDE
CONCEPTUAL DETENTION PONDS
EXISTING FLOW ARROW

DRAINAGE NOTE
POND LOCATIONS, SIZES, AND DRAINAGE AREAS SHOWN ARE CONCEPTUAL AND BASED ON EXISTING CONDITIONS. FINAL POND LAYOUTS, VOLUMES, AND DRAINAGE PATTERNS WILL BE REFINED DURING DETAILED DESIGN AND WILL COMPLY WITH ALL APPLICABLE CITY CODES AND DRAINAGE CRITERIA.

NOTE: THIS EXHIBIT IS CONCEPTUAL IN NATURE AND IS NOT INTENDED TO BE USED FOR CONSTRUCTION PURPOSES

Kimley-Horn
GRAPHIC SCALE IN FEET
SCALE: 1" = 500'
NORTH
0 250 500
©2024 Kimley-Horn, a subsidiary of Jacobs Engineering Group, Inc. All rights reserved.
Austin, TX 78744 • PH: (512) 618-9642
State of Texas Registration No. T-626



Employment opportunities:

- » The core and shell construction will require up to 500 workers per building, which will result in up to 2000 new construction jobs in the City of Taylor for a two-year duration. The DC interiors scope of work will be another 1.5 years with an estimated 1000 construction jobs per year for a combined 3000 construction jobs over 3.5 years.

KDC project job Training Commitment:

- » KDC is working with Texas State Technical College in Williamson County to support job training and career paths for local students
- » KDC will have approximately 7 KDC staff on-site during construction and will commit to hire and train 2 Taylor, Texas high school students each summer during construction



DALLAS | ATLANTA | CHARLOTTE | 214.696.1700 | KDC.COM

DEVELOPMENT THAT EXCITES & INSPIRES